

Van Zandt County, Texas Communications Tower Infrastructure RFP

RFP ADDENDUM NUMBER 1

Release Date: July 14, 2023

Pursuant to Section 1.6.2 of the Communications Tower Infrastructure RFP (released July 5, 2023), this document is intended as an Addendum to the RFP. Respondents are reminded that only information contained in the RFP and in official addenda should be considered in preparation of proposals. No verbal communications with the County and/or its agents shall be binding.

The questions herein were submitted in writing to the County's designated RFP Manager prior to release of this addendum. Associated responses to these questions follow. This addendum also contains a reminder about the Mandatory Pre-Proposal Conference and an explanation of the RFP supplemental documents that are being provided. Please note that additional questions have been received and those will be answered in a subsequent addendum.

Mandatory Pre-Proposal Conference

This is a reminder that attendance at the Pre-Proposal Conference is mandatory to submit a proposal.

A representative from each responding firm must attend the conference and complete the official sign-in form provided at the conference in order for their proposal to be accepted by the County. The conference will begin with an informational meeting. Site visits to each of the five (5) tower site locations will follow the Pre-Proposal Conference meeting. Each site visit will last approximately 30 minutes to allow representatives from each firm ample time to collect photos, notes and to complete any preliminary due diligence required to assist them with the preparation of their Proposal Package. It is anticipated that the Pre-Proposal Conference and the site visits will last from 9:00am - 5:00pm. Maps will be provided at the meeting and are now posted on the County's website.

Date: Monday July 24, 2023

Start Time: 9:00am CST

Location: Van Zandt County Regional Airport
36671 State Highway 64, Wills Point, Texas 75169

Supplemental Documents

The following supplemental documents have been made available to aid in the preparation of proposals. These documents have been posted on the County website with this addendum.

Item 1: Communications Tower Infrastructure RFP - MS Word Format

The RFP document (Van Zandt County Tower Infrastructure RFP_2023July5_Final.docx) is provided in Word format to assist with preparation of a Point-by-Point response as required Section 1.11.2 (Technical Proposal) of the RFP. Please note that the Point-by-Point response (Technical Response) should include all sections (Sections 1-4) of the RFP document and all issued Addendums.

Item 2: Pre-Proposal Meeting Site Visit Schedule and Maps

The schedule and maps (Pre-Proposal Conference Site Visit Schedule & Maps.pdf) for the five (5) site visits that will follow the Pre-Proposal Conference meeting are provided to ensure attendees are able to successfully navigate to each tower site.

Questions are in black, answers are in *red italics*.

Question 1: 3.8.1 Tower Requirements / General

The RFP states that new towers shall be solid steel leg design. Can tubular leg designs (aka HSS - Hollow Steel Sections) be used for the new towers?

Answer: The County prefers solid steel leg designed towers, which are generally easier and less expensive to maintain.

Question 2: 3.8.10 Typical Wireless Internet Service Provider (WISP) Installation

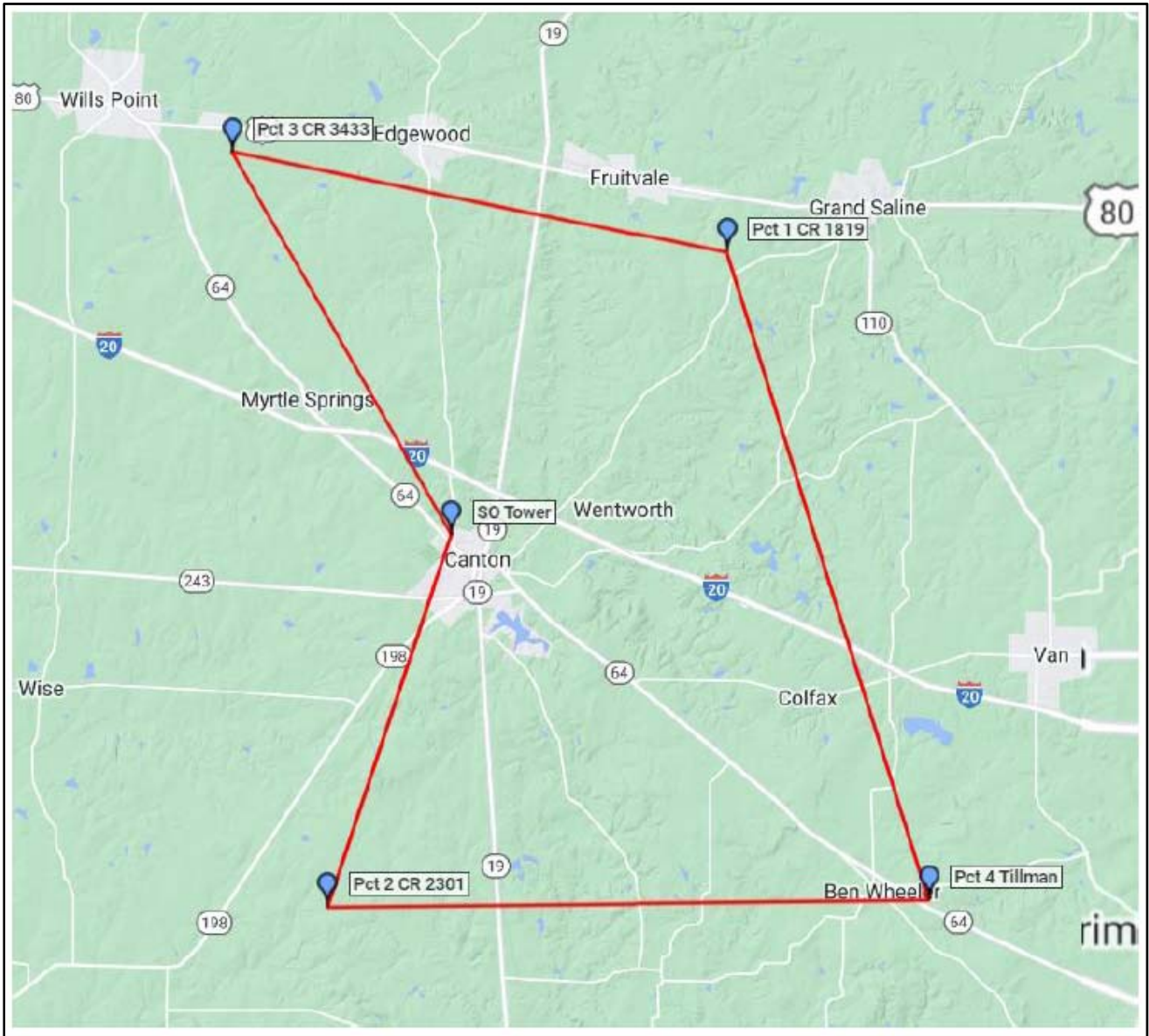
With regards to the proposed WISP designs, will the Cambium and Aviat equipment be installed around the tower or is it all planned to be installed on one side or face of each tower?

Answer: The assumed typical WISP installation would utilize eight Cambium access point antennas to provided coverage over 360 degrees from each tower site using both unlicensed and licensed fixed wireless frequencies in the 6 GHz and 3.65 GHz bands. The Cambium directional antennas will be evenly distributed and installed around all sides/faces of each tower in order to create the omnidirectional coverage scenario. As for the Aviat Networks antennas, they will be used for backhaul. Please assume the Aviat antennas will be mounted on two different legs of the tower. The specific azimuths of these antennas are not available but assume they will be pointed 90-180 degrees apart.

Question 3: 3.8.8 Van Zandt County P25 Installation Specifications

Table 4 in the RFP contains the County’s backhaul microwave antenna installation details for each site. Table 4 does not specify the transmitting azimuths of the proposed microwave dishes at each site. Please provide the azimuths for the microwave dishes for each tower?

Answer: The map and table provided below depict and denote the azimuths for each of the microwave dishes that comprise the backhaul design for the County’s P25 radio system. Two six foot microwave dishes will be installed on each tower site to create the backhaul ring depicted on the map.



TRUE / MAGNETIC AZIMUTHS					
	Site A		Site B		
Site Name	True	Magnetic	Magnetic	True	Site Name
Pct 1 CR 1819	163	161	341	343	Pct 4 Tillman
Pct 2 CR 2301	89	87	267	269	Pct 4 Tillman
Pct 2 CR 2301	18	16	196	198	SO Tower
Pct 3 CR 3433	102	100	280	282	Pct 1 CR 1819
Pct 3 CR 3433	150	148	328	330	SO Tower

Question 4: 3.8.1 Tower Requirements / General

The RFP states in Section 3.8.1 that each new tower shall be designed for a minimum sustained 120-mph wind speed with the full complement of necessary antennas and required lights and other federally-required equipment. Please clarification the requirement for a minimum sustained 120mph wind speed for the towers. The industry standard is a 3 second wind gust. Sustained wind requires a 1 minute timeframe. This design specification will dramatically increase the loading design of the towers and significantly impact the steel and foundation requirements and cost.

Answer: The County has reviewed the requirements in the RFP for the structural design of the “greenfield” towers and have issued the following updated design requirements criteria that will supersede the previous specifications in the RFP and that should be used to design the tower foundations and steel supporting structure.

Code / Standard:	<i>2018 Int’l Building Code / ANSI/TIA-222-H Standard</i>
Risk Category:	<i>III - Essential Communications (aka Risk Category 3)</i>
Full Wind:	<i>115 mph (Ultimate 3-Second Gust) - with no Radial Ice</i>
Wind Speed (Iced Case):	<i>30 mph with 1.5” radial ice</i>
Ice Thickness:	<i>1.5”</i>
Service Load Wind Speed:	<i>60 mph (no ice)</i>
Exposure Category:	<i>C</i>
Topographic Category:	<i>1</i>
Coordinates (Lat. & Lon.):	<i>See Table 1 in Section 3.2 of the RFP for each site’s certified coordinates and ground elevation.</i>
Ground Elevation (GE):	

Question 5: 3.10 Generator

The RFP requests pricing and comparison advantages/details for both propane and diesel powered generators in two different sizes. Does the County want a run time comparison between propane and diesel powered generators provided in the proposal as part of the requested advantages comparison?

Answer: Yes, the County would like to understand the run time of the 30kW and 45kW propane generators with a 1,000 gallon tank compared to the 30kW and 45kW diesel generator with the largest possible “base-style” tank available from the manufacturer. The run time analyses should take into account each generator is operating at a 75% load of its peak rating (22.5kW load for the 30kW generator and 33.75kW load for the 45kW unit). Please provide the anticipated run time comparison in your proposal assuming the provided loads. The provided advantage comparison between the two fuel types of generator should also include information about the long term maintenance costs.

Question 6: 3.6 Construction Drawings

The County provided with the RFP a set of construction drawing (CDs) for the Precinct 4 Tillman tower site (Attachment 4). In addition, the County provided with the RFP land survey drawings for the other four tower sites that are designated as “greenfield” sites (Attachment 3). Will the County provide CDs for the four “greenfield” tower sites?

Answer: No, the County does not have existing CDs for the four proposed (“greenfield”) tower sites. Section 3.6 of the RFP specifies the requirements for proposed CDs and as-built CDs for all five tower sites that are part of the County’s P25 radio system design. These requirements are part of the scope of work for the selected Contractor. Pricing for the CDs should be included on the provided Proposal Pricing Sheet on the designated line for each site.

Question 7: 1.1 Legal Notice – RFP / 1.6.5 Submission of Proposals / 1.11 Proposal Contents

Are all five sites due on Friday August 4, 2023 at 3:00pm?

Answer: Yes, the entire proposal package with all of the sections/items listed in Section 1.11 (Proposal Content) must be included in the Respondent's Proposal Package submission. This submission includes details and pricing for all five sites. Proposals are due on Friday August 4, 2023 at 3:00pm local time. Any proposal submission that lacks any of the required components will not constitute a proposal, will not be evaluated, and will not be eligible for contract award.